

Rittal – The System.

Faster – better – everywhere.

Wallmounts Buyer's Guide



ENCLOSURES

POWER DISTRIBUTION

CLIMATE CONTROL

IT INFRASTRUCTURE

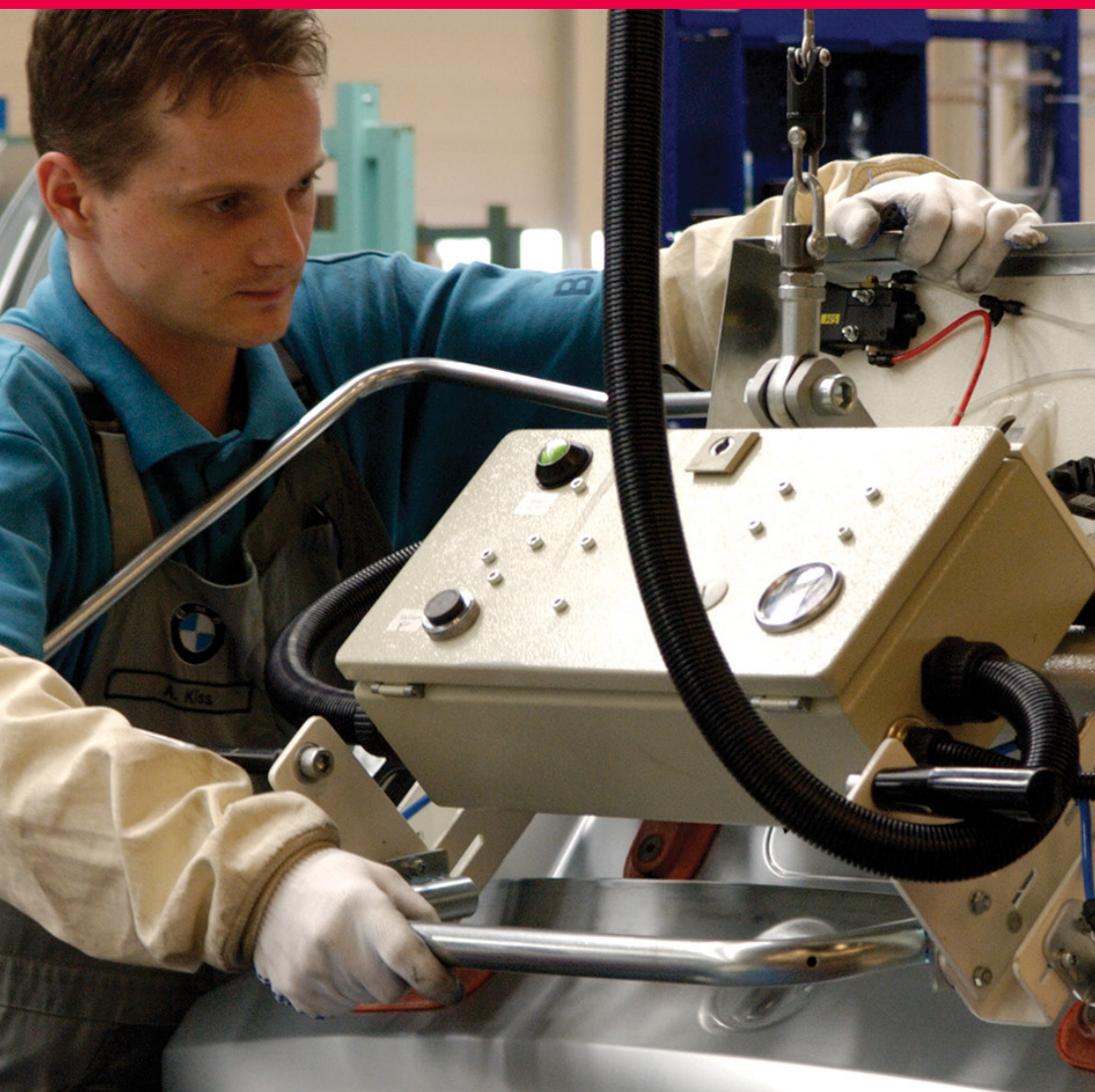
SOFTWARE & SERVICES

FRIEDHELM LOH GROUP



Choose the Best:
Carbon Steel Wallmount Enclosures





Rittal is the world's leading provider of compact enclosures

Rittal WM enclosures set the standard for maximum use of space and ease of installation. WM compact enclosures can be used for virtually any application. NEMA protection ratings are ensured through a secure locking system, foamed-in-place gasket and knife-edge perimeter. Features include a body constructed of cold rolled steel, steel doors and zinc-plated mounting panels. WM enclosures are readily available in all of the most popular sizes, protection categories and configurations – including universal disconnect cutout.



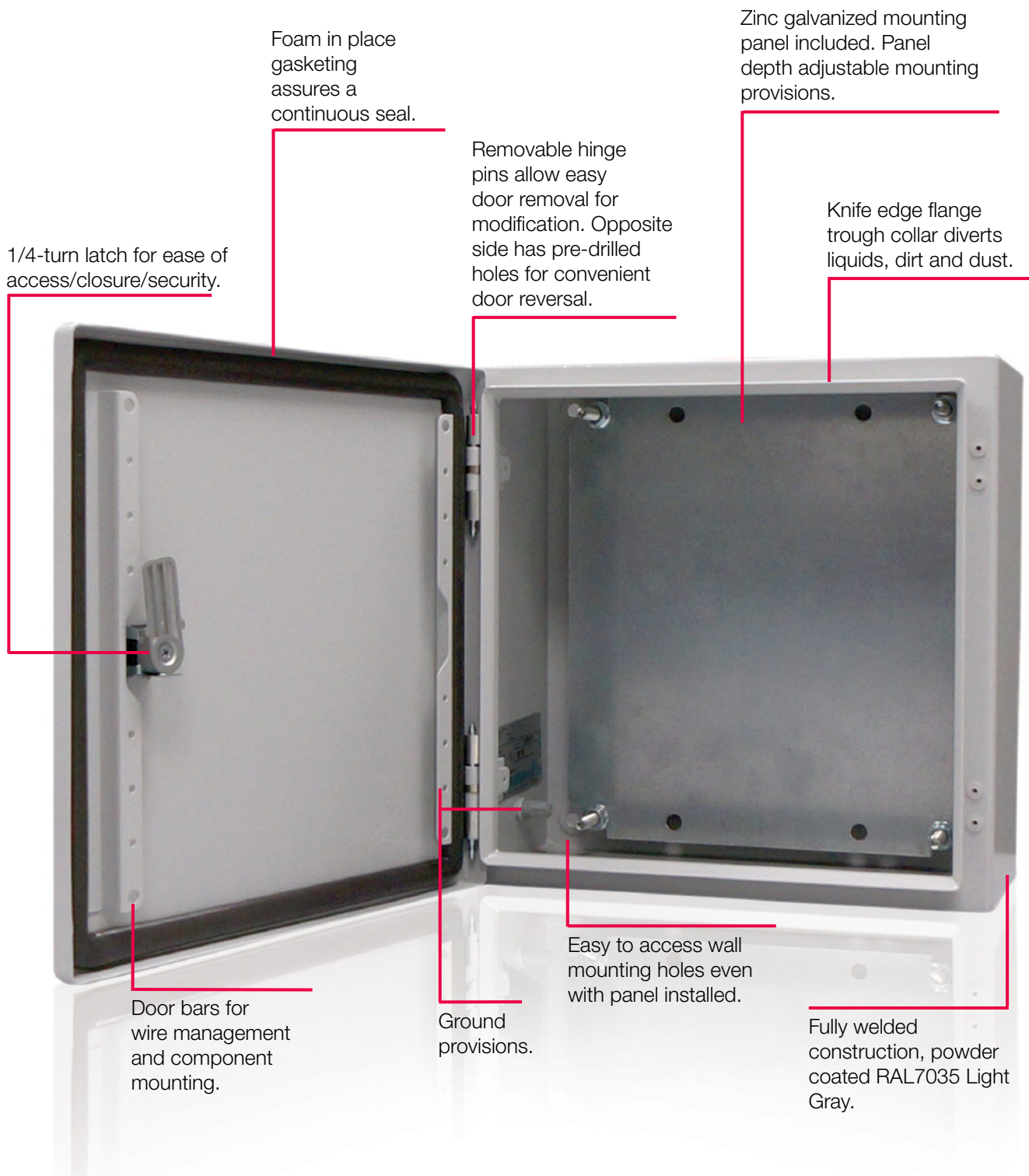
Carbon Steel Wallmount Enclosures

Carbon Steel Features:

- Multi-fold single body construction provides superior strength and stability with fewer welds
- Optimum surface finish with electrophoresis dip-coat primer and powder-coat paint
- Flange collar opening and seamless foamed-in-place gasket create a tight continuous seal
- UL Type 12 / 3R / 4 rated
- Includes depth adjustable galvanized mounting panel
- Ideal for indoor/outdoor use



Carbon Steel Wallmount Enclosures



1/4-turn latch for ease of access/closure/security.

Foam in place gasketing assures a continuous seal.

Removable hinge pins allow easy door removal for modification. Opposite side has pre-drilled holes for convenient door reversal.

Zinc galvanized mounting panel included. Panel depth adjustable mounting provisions.

Knife edge flange trough collar diverts liquids, dirt and dust.

Door bars for wire management and component mounting.

Ground provisions.

Easy to access wall mounting holes even with panel installed.

Fully welded construction, powder coated RAL7035 Light Gray.



Get the **FREE Wallmount App** for iOS and Android

Choose the Best:
Stainless Steel Wallmount Enclosures



Stainless Steel Wallmount Enclosures

Engineered to make the small stuff matter. Rittal WM stainless steel enclosures protect critical equipment in harsh environments under the most demanding conditions by paying attention to design elements like blind nuts on the back side that ensure a snug fit and make flush-to-the-wall installations a snap.

When precision instruments, measuring tools and critical controls need protection from the elements, inside or out, Rittal's durable, one-piece, space-saving wallmount designs are easy to install and maintain.

Stainless steel enclosures are available in a variety of shapes, sizes and configurations for use in the most demanding environments with a range of critical protection ratings – from UL Type 12 to Type 4X – and for use in sensitive areas in a variety of industrial settings.

Standard features include:

- 304 and 316L stainless steel construction
- Blind nut mounting
- Secure locking system
- Foamed-on gaskets
- Zinc-plated mounting panels
- Protection ratings for the most demanding conditions



Stainless Steel Wallmount Enclosures

Stainless Steel Features:

- Fully welded construction of 304 or 316L stainless steel
- UL Type 4X rated
- Rear blind nut design maintains 4X integrity
- Ideal for indoor/outdoor use in harsh, corrosive environments



Stainless Steel Wallmount Enclosures



Rear, blind nut design enables enclosure to be mounted to the wall and maintain the integrity of the UL Type 4X rating.

Removable stainless steel hinge pins allow easy door removal for modification.

Stainless steel screw driver insert and 1/4-turn latch for ease of access/closure/security.

Zinc galvanized mounting panel included. Panel depth adjustable mounting provisions.

Foam in place gasketing provide a water and dust proof environmental seal.

Defined edge flange trough collar diverts liquids, dirt and dust.

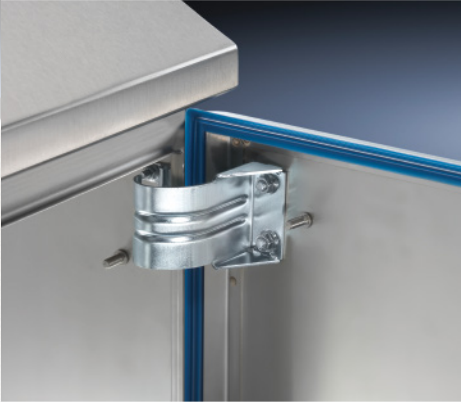
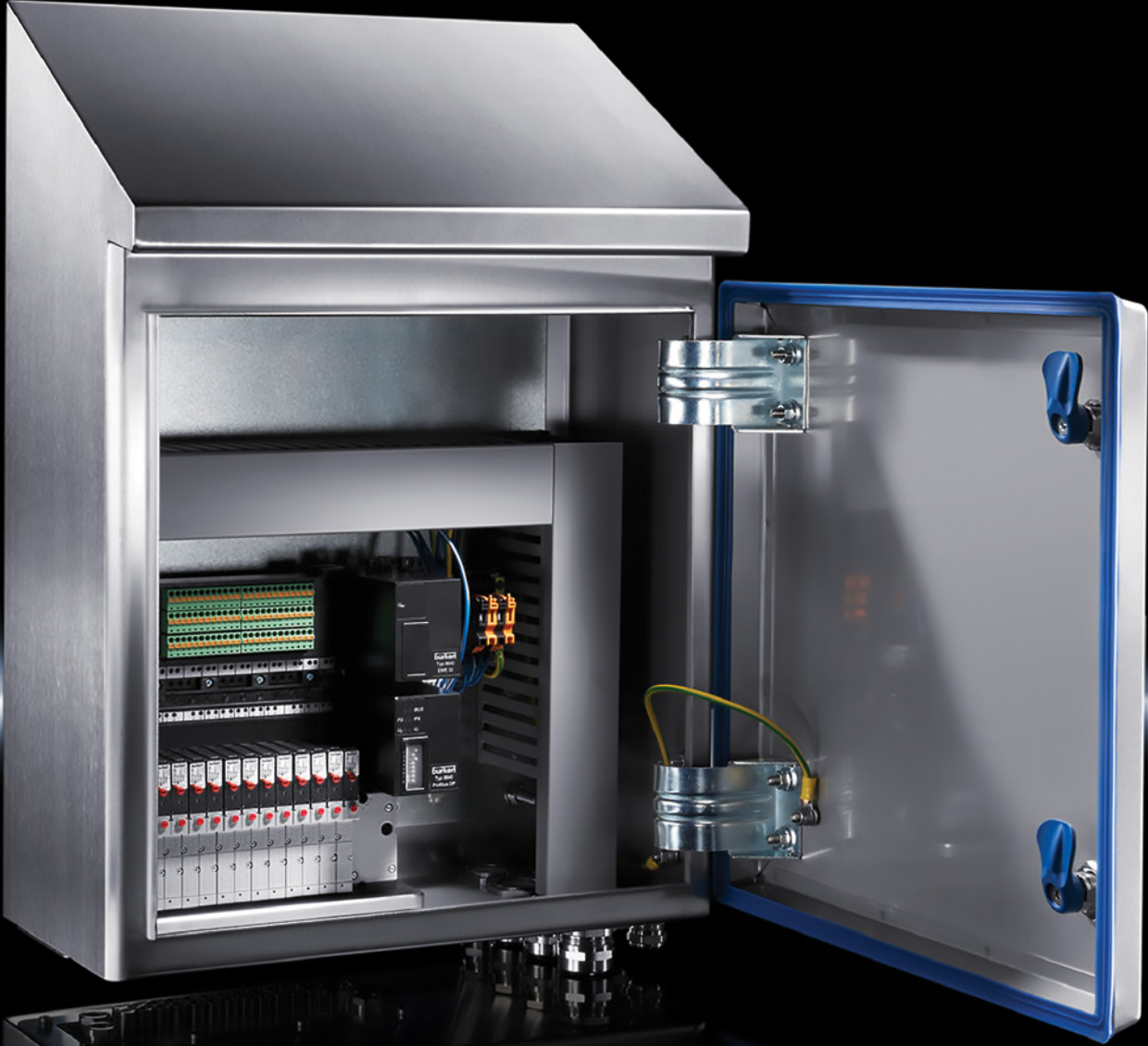
Ground provisions.

Fully welded construction, Stainless Steel.



Get the **FREE Wallmount App** for iOS and Android

Choose the Best: Hygienic Design Wallmount Enclosure



Hygienic Design Wallmount Enclosures

Excellence in Hygienic Standards for the Food Industry

Successful Hygienic Design (HD) helps you battle the ever-present risk of contamination. It is crucial to maximize the units' safety for open processes. Our terminal boxes and compact enclosures are key elements in our plan for your cleaning solution. But we don't stop there. Rittal's buying system and production data enclosures have a number of flexible design options that can be integrated into production clean rooms for almost endless possibilities. Compatible accessories such as wall spacer brackets and HD-compatible cable glands customize your unit to your exact specifications.

It's All About Cleanliness

Our designs optimize your cleaning. There is no external cavity between the enclosure and the door. Strategic silicone sealing is joint-free, extends all around, and is a distinctive blue color to distinguish it from foodstuffs. Hinges are inside the sealing zone to create an exceptionally easy-to-clean surface on the outside. Every surface is designed with durability while being easy to maintain, from captive screws to stainless steel locks. Contamination risks are minimized, reducing the excessive use of cleaning and disinfecting agents.



Roof angled
forward
at 30° to allow fluid
to drain rapidly
and to allow for
easier inspections.



Hygienic Design Wallmount Enclosures

Hygienic Design Features:

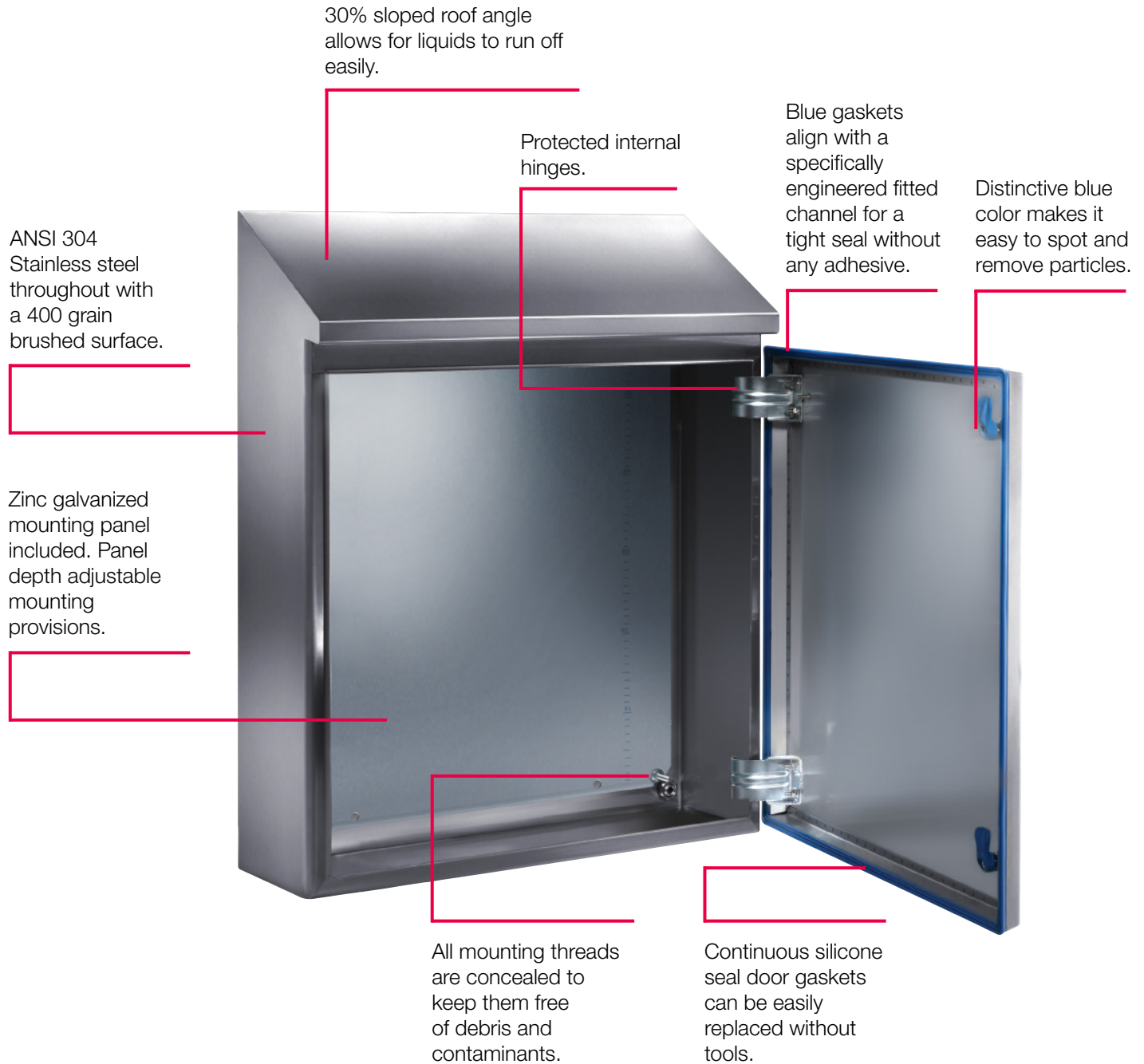
- 30% roof angle allows for liquids to run off easily
- Fully welded construction of 304 stainless steel
- One-piece, replaceable blue silicone gasket provides a secure seal while distinctive color makes particles easy to spot and remove
- UL Type 4X with an FDA Approved gasket material
- Ideal for food/beverage, pharmaceutical, or any environment with sanitation concerns, and high pressure washes



Hygienic Design Wallmount Enclosures

Shorter cleaning times while using less water and fewer chemicals.

- Reduced downtime for cleaning/maintenance
- Significantly reduced risk of contamination
- Enhanced protection for customers/employee
- Available to UL Type 4X specifications



Get the **FREE Wallmount App**
for iOS and Android

Carbon Steel Wallmount Enclosures

WM Wallmount Enclosures—Carbon Steel (mounting panel included)

Part No.	Description	No. of Door(s)	H		W		D		Panel H		Panel W	
			in	mm	in	mm	in	mm	in	mm	in	mm
WM121206NC	WM 12x12x6 Carbon Steel	1	12	300	12	300	6	150	11	275	10	254
WM161206NC	WM 16x12x6 Carbon Steel	1	16	400	12	300	6	150	15	375	10	254
WM161606NC	WM 16x16x6 Carbon Steel	1	16	400	16	400	6	150	15	375	14	354
WM162006NC	WM 16x20x6 Carbon Steel	1	16	400	20	500	6	150	15	375	18	449
WM201606NC	WM 20x16x6 Carbon Steel	1	20	500	16	400	6	150	19	475	14	354
WM202006NC	WM 20x20x6 Carbon Steel	1	20	500	20	500	6	150	19	475	18	449
WM241606NC	WM 24x16x6 Carbon Steel	1	24	600	16	400	6	150	22	570	14	354
WM242006NC	WM 24x20x6 Carbon Steel	1	24	600	20	500	6	150	22	570	18	449
WM242406NC	WM 24x24x6 Carbon Steel	1	24	600	24	600	6	150	22	570	22	549
WM302406NC	WM 30x24x6 Carbon Steel	1	30	760	24	600	6	150	29	730	22	549
WM161208NC	WM 16x12x8 Carbon Steel	1	16	400	12	300	8	210	15	375	10	254
WM161608NC	WM 16x16x8 Carbon Steel	1	16	400	16	400	8	210	15	375	14	354
WM162008NC	WM 16x20x8 Carbon Steel	1	16	400	20	500	8	210	15	375	18	449
WM201608NC	WM 20x16x8 Carbon Steel	1	20	500	16	400	8	210	19	475	14	354
WM202008NC	WM 20x20x8 Carbon Steel	1	20	500	20	500	8	210	19	475	18	449
WM202408NC	WM 20x24x8 Carbon Steel	1	20	500	24	600	8	210	19	475	22	549
WM241608NC	WM 24x16x8 Carbon Steel	1	24	600	16	400	8	210	22	570	14	354
WM242008NC	WM 24x20x8 Carbon Steel	1	24	600	20	500	8	210	22	570	18	449
WM242408NC	WM 24x24x8 Carbon Steel	1	24	600	24	600	8	210	22	570	22	570
WM243008NC	WM 24x30x8 Carbon Steel	1	24	600	30	760	8	210	22	570	28	704

WM Wallmount Enclosures—Carbon Steel Disconnect (mounting panel included)

Part No.	Description	No. of Door(s)	H		W		D		Panel H		Panel W	
			in	mm	in	mm	in	mm	in	mm	in	mm
WM202208XC	WM 20x22x08 Carbon Steel	1	20	500	22	550	8	210	19	470	18	449
WM242208XC	WM 24x22x8 Carbon Steel	1	24	600	22	550	8	210	22	570	18	449
WM242608XC	WM 24x26x8 Carbon Steel	1	24	600	26	650	8	210	22	570	22	549
WM302608XC	WM 30x26x8 Carbon Steel	1	30	760	26	650	8	210	29	730	22	549
WM363208XC	WM 36x32x8 Carbon Steel	1	36	900	31	825	8	210	34	870	28	704
WM603810XC	WM 60x38x10 Carbon Steel	1	60	1500	38	975	10	250	57	1455	33	840
WM302612XC	WM 30x26x12 Carbon Steel	1	30	760	26	650	12	300	29	730	22	549
WM363212XC	WM 36x32x12 Carbon Steel	1	36	900	32	825	12	300	34	870	29	730
WM423212XC	WM 42x32x12 Carbon Steel	1	42	1050	32	825	12	300	40	1020	29	730
WM483812XC	WM 48x38x12 Carbon Steel	1	48	1200	38	975	12	300	45	1155	33	840
WM603812XC	WM 60x38x12 Carbon Steel	1	60	1500	38	976	12	300	57	1455	33	840
WM603816XC	WM 60x38x16 Carbon Steel	1	60	1500	38	975	16	400	57	1455	33	840

Carbon Steel Wallmount Enclosures

WM Wallmount Enclosures—Carbon Steel (mounting panel included)

Part No.	Description	No. of Door(s)	H		W		D		Panel H		Panel W	
			in	mm	in	mm	in	mm	in	mm	in	mm
WM302008NC	WM 30x20x8 Carbon Steel	1	30	760	20	500	8	210	29	730	18	449
WM302408NC	WM 30x24x8 Carbon Steel	1	30	760	24	600	8	210	29	730	22	549
WM303008NC	WM 30x30x8 Carbon Steel	1	30	760	30	760	8	210	29	730	28	704
WM362408NC	WM 36x24x8 Carbon Steel	1	36	900	24	600	8	210	34	870	22	549
WM363008NC	WM 36x30x8 Carbon Steel	1	36	900	30	760	8	210	34	870	28	704
WM363608NC	WM 36x36x8 Carbon Steel	1	36	900	36	900	8	210	34	870	33	840
WM423008NC	WM 42x30x8 Carbon Steel	1	42	1050	30	760	8	210	40	1020	28	704
WM202010NC	WM 20x20x10 Carbon Steel	1	20	500	20	500	10	250	19	475	18	449
WM242010NC	WM 24x20x10 Carbon Steel	1	24	600	20	500	10	250	22	570	18	449
WM242410NC	WM 24x24x10 Carbon Steel	1	24	600	24	600	10	250	22	570	22	549
WM302410NC	WM 30x24x10 Carbon Steel	1	30	760	24	600	10	250	29	730	22	549
WM303010NC	WM 30x30x10 Carbon Steel	1	30	760	30	760	10	250	29	730	28	704
WM362410NC	WM 36x24x10 Carbon Steel	1	36	900	24	600	10	250	34	870	22	549
WM363010NC	WM 36x30x10 Carbon Steel	1	36	900	30	760	10	250	34	870	28	704
WM423610NC	WM 42x36x10 Carbon Steel	1	42	1050	36	900	10	250	40	1020	33	840
WM483610NC	WM 48x36x10 Carbon Steel	1	48	1200	36	900	10	250	45	1155	33	840
WM202012NC	WM 20x20x12 Carbon Steel	1	20	500	20	500	12	300	19	470	18	449
WM242012NC	WM 24x20x12 Carbon Steel	1	24	600	20	500	12	300	22	570	18	449
WM242412NC	WM 24x24x12 Carbon Steel	1	24	600	24	600	12	300	22	570	22	549
WM302412NC	WM 30x24x12 Carbon Steel	1	30	760	24	600	12	300	29	730	22	549
WM303012NC	WM 30x30x12 Carbon Steel	1	30	760	30	760	12	300	29	730	28	704
WM362412NC	WM 36x24x12 Carbon Steel	1	36	900	24	600	12	300	34	870	22	549
WM363012NC	WM 36x30x12 Carbon Steel	1	36	900	30	760	12	300	34	870	28	704
WM363612NC	WM 36x36x12 Carbon Steel	1	36	900	36	900	12	300	34	870	33	840
WM364812NC	WM 36x48x12 Carbon Steel	2	36	900	48	1200	12	300	33	850	45	1150
WM366012NC	WM 36x60x12 Carbon Steel	2	36	900	60	1500	12	300	33	850	57	1450
WM423612NC	WM 42x36x12 Carbon Steel	1	42	1050	36	900	12	300	40	1020	33	840
WM483612NC	WM 48x36x12 Carbon Steel	1	48	1200	36	900	12	300	45	1155	33	840
WM484812NC	WM 48x48x12 Carbon Steel	2	48	1200	48	1200	12	300	45	1150	45	1150
WM603612NC	WM 60x36x12 Carbon Steel	1	60	1500	36	900	12	300	57	1455	33	840
WM363016NC	WM 36x30x16 Carbon Steel	1	36	900	30	760	16	400	34	870	28	704
WM483616NC	WM 48x36x16 Carbon Steel	1	48	1200	36	900	16	400	45	1155	33	840
WM603616NC	WM 60x36x16 Carbon Steel	1	60	1500	36	900	16	400	57	1450	33	840

Stainless Steel Wallmount Enclosures

WM Wallmount Enclosures—Type 304 Stainless Steel (mounting panel included)

Part No.	Description	No. of Door(s)	H		W		D		Panel H		Panel W	
			in	mm	in	mm	in	mm	in	mm	in	mm
WM121206N4	WM 12x12x6 Type 304	1	12	300	12	300	6	150	11	275	10	254
WM161206N4	WM 16x12x6 Type 304	1	16	400	12	300	6	150	15	375	10	254
WM161606N4	WM 16x16x6 Type 304	1	16	400	16	400	6	150	15	375	14	354
WM161208N4	WM 16x12x8 Type 304	1	16	400	12	300	8	210	15	375	10	254
WM161608N4	WM 16x16x8 Type 304	1	16	400	16	400	8	210	15	375	14	354
WM201608N4	WM 20x16x8 Type 304	1	20	500	16	400	8	210	19	475	14	354
WM202008N4	WM 20x20x8 Type 304	1	20	500	20	500	8	210	19	470	18	449
WM241608N4	WM 24x16x8 Type 304	1	24	600	16	400	8	210	22	570	14	354
WM242008N4*	WM 24x20x8 Type 304	1	24	600	20	500	8	210	22	570	18	449
WM242408N4*	WM 24x24x8 Type 304	1	24	600	24	600	8	210	22	570	22	549
WM302408N4*	WM 30x24x8 Type 304	1	30	760	24	600	8	210	29	730	22	549
WM303008N4*	WM 30x30x8 Type 304	1	30	760	30	760	8	210	29	730	28	704
WM362408N4*	WM 36x24x8 Type 304	1	36	900	24	600	8	210	34	870	22	549
WM242010N4*	WM 24x20x10 Type 304	1	24	600	20	500	10	250	22	570	18	449
WM302410N4*	WM 30x24x10 Type 304	1	30	760	24	600	10	250	29	730	22	549
WM303010N4	WM 30x30x10 Type 304	1	30	760	30	760	10	250	29	730	28	704
WM363010N4*	WM 36x30x10 Type 304	1	36	900	30	760	10	250	34	870	28	704
WM242412N4*	WM 24x24x12 Type 304	1	24	600	24	600	12	300	23	570	22	549
WM302412N4*	WM 30x24x12 Type 304	1	30	760	24	600	12	300	29	730	22	549
WM363012N4*	WM 36x30x12 Type 304	1	36	900	30	760	12	300	34	870	28	704
WM363612N4*	WM 36x36x12 Type 304	1	36	900	36	900	12	300	34	870	33	840
WM423612N4	WM 42x36x12 Type 304	1	42	1050	36	900	12	300	40	1020	33	840
WM483612N4	WM 48x36x12 Type 304	1	48	1200	36	900	12	300	45	1155	33	840
WM483616N4	WM 48x36x16 Type 304	1	48	1200	36	900	16	400	46	1155	33	840
WM603616N4	WM 60x36x16 Type 304	1	60	1500	36	900	16	400	57	1455	33	840

*Additional latching option available. In addition to the standard ¼-turn latching system, a 3-point latch option is available for these products. To order add "3PT" at the end of marked alphanumeric part number.

Stainless Steel Wallmount Enclosures

WM Wallmount Enclosures— Type 304 Stainless Steel Disconnect (mounting panel included)

Part No.	Description	No. of Door(s)	H		W		D		Panel H		Panel W	
			in	mm	in	mm	in	mm	in	mm	in	mm
WM242608X4	WM 24x26x8 Type 304	1	24	600	26	650	8	210	22	570	22	549
WM363212X4	WM 36x32x12 Type 304	1	36	900	32	825	12	300	34	870	28	704
WM483812X4	WM 48x38x12 Type 304	1	48	1200	38	975	12	300	45	1155	33	840
WM603812X4	WM 60x38x12 Type 304	1	60	1500	38	975	12	300	57	1455	33	840
WM483816X4	WM 48x38x16 Type 304	1	48	1200	38	975	16	400	46	1155	33	840

WM Wallmount Enclosures— Type 304 Stainless Steel Slope Top (mounting panel included)

Part No.	Description	No. of Door(s)	H		W		D		Panel H		Panel W	
			in	mm	in	mm	in	mm	in	mm	in	mm
WMS161208N4	WM 16x12x8 Type 304	1	16	395	12	300	8	210	15	375	10	254
WMS161608N4	WM 16x16x8 Type 304	1	16	395	16	400	8	210	15	375	14	354
WMS201608N4	WM 20x16x8 Type 304	1	20	495	16	400	8	210	19	475	14	354
WMS202008N4	WM 20x20x8 Type 304	1	20	495	20	500	8	210	19	475	18	449
WMS242008N4	WM 24x20x8 Type 304	1	24	595	20	500	8	210	22	570	18	449
WMS242408N4	WM 24x24x8 Type 304	1	24	595	24	600	8	210	22	570	22	549
WMS302408N4	WM 30x24x8 Type 304	1	30	755	24	600	8	210	29	730	22	549
WMS303008N4	WM 30x30x8 Type 304	1	30	755	30	760	8	210	29	730	28	704
WMS363008N4	WM 36x30x8 Type 304	1	36	895	30	760	8	210	34	870	28	704
WMS201612N4	WM 20x16x12 Type 304	1	20	495	16	400	12	300	19	475	14	354
WMS202012N4	WM 20x20x12 Type 304	1	20	495	20	500	12	300	19	475	18	449
WMS242412N4	WM 24x24x12 Type 304	1	24	595	24	600	12	300	22	570	22	549
WMS302412N4	WM 30x24x12 Type 304	1	30	755	24	600	12	300	29	730	22	549
WMS363012N4	WM 36x30x12 Type 304	1	36	895	30	760	12	300	34	870	28	704
WMS363612N4	WM 36x36x12 Type 304	1	36	895	36	900	12	300	34	870	33	840
WMS363016N4	WM 36x30x16 Type 304	1	36	895	30	760	16	400	34	870	28	704
WMS483616N4	WM 48x36x16 Type 304	1	48	1195	36	900	16	400	45	1155	33	840
WMS603616N4	WM 60x36x16 Type 304	1	60	1495	36	900	16	400	57	1455	33	840

WM Wallmount Enclosures— Type 316L Stainless Steel (mounting panel included)

Part No.	Description	No. of Door(s)	H		W		D		Panel H		Panel W	
			in	mm	in	mm	in	mm	in	mm	in	mm
WM121206N6	WM 12x12x6 Type 316L	1	12	300	12	300	6	150	11	275	10	254
WM161206N6	WM 16x12x6 Type 316L	1	16	400	12	300	6	150	15	375	10	254
WM161606N6	WM 16x16x6 Type 316L	1	16	400	16	400	6	150	15	375	14	354
WM161208N6	WM 16x12x8 Type 316L	1	16	400	12	300	8	210	15	375	10	254
WM201608N6	WM 20x16x8 Type 316L	1	20	500	16	400	8	210	19	475	14	354
WM202008N6	WM 20x20x8 Type 316L	1	20	500	20	500	8	210	19	470	18	449
WM242008N6*	WM 24x20x8 Type 316L	1	24	600	20	500	8	210	22	570	18	449
WM242408N6*	WM 24x24x8 Type 316L	1	24	600	24	600	8	210	22	570	22	549

*Additional latching option available. In addition to the standard ¼-turn latching system, a 3-point latch option is available for these products. To order add "3PT" at the end of marked alphanumeric part number.

Stainless Steel Wallmount Enclosures

WM Wallmount Enclosures— Type 316L Stainless Steel (mounting panel included)

Part No.	Description	No. of Door(s)	H		W		D		Panel H		Panel W	
			in	mm	in	mm	in	mm	in	mm	in	mm
WM242010N6*	WM 24x24x10 Type 316L	1	24	600	20	500	10	250	22	570	18	449
WM302412N6*	WM 30x24x12 Type 316L	1	30	760	24	600	12	300	29	730	22	549
WM363612N6*	WM 36x36x12 Type 316L	1	36	900	36	900	12	300	34	870	33	840
WM483612N6	WM 48x36x12 Type 316L	1	48	1200	36	900	12	300	45	1155	33	840
WM603612N6	WM 60x36x12 Type 316L	1	60	1500	36	900	12	300	57	1455	33	840
WM483616N6	WM 48x36x16 Type 316L	1	48	1200	36	900	16	400	46	1155	33	840
WM603616N6	WM 60x36x16 Type 316L	1	60	1500	36	900	16	400	57	455	33	840

WM Wallmount Enclosures— Type 316L Stainless Steel Slope Top (mounting panel included)

Part No.	Description	No. of Door(s)	H		W		D		Panel H		Panel W	
			in	mm	in	mm	in	mm	in	mm	in	mm
WMS161208N6	WM 16x12x8 Type 316L	1	16	395	12	300	8	210	15	375	10	254
WMS161608N6	WM 16x16x8 Type 316L	1	16	395	16	400	8	210	15	375	14	354
WMS201608N6	WM 20x16x8 Type 316L	1	20	495	16	400	8	210	19	475	14	354
WMS202008N6	WM 20x20x8 Type 316L	1	20	495	20	500	8	210	19	475	18	449
WMS242008N6	WM 24x20x8 Type 316L	1	24	595	20	500	8	210	22	570	18	449
WMS242408N6	WM 24x24x8 Type 316L	1	24	595	24	600	8	210	22	570	22	549
WMS302408N6	WM 30x24x8 Type 316L	1	30	755	24	600	8	210	29	730	22	549
WMS303008N6	WM 30x30x8 Type 316L	1	30	755	30	760	8	210	29	730	28	704
WMS363008N6	WM 36x30x8 Type 316L	1	36	895	30	760	8	210	34	870	28	704
WMS201612N6	WM 20x16x12 Type 316L	1	20	495	16	400	12	300	19	475	14	354
WMS202012N6	WM 20x20x12 Type 316L	1	20	495	20	500	12	300	19	475	18	449
WMS242412N6	WM 24x24x12 Type 316L	1	24	595	24	600	12	300	22	570	22	549
WMS302412N6	WM 30x24x12 Type 316L	1	30	755	24	600	12	300	29	730	22	549
WMS363012N6	WM 36x30x12 Type 316L	1	36	895	30	760	12	300	34	870	28	704
WMS363612N6	WM 36x36x12 Type 316L	1	36	895	36	900	12	300	34	870	33	840
WMS363016N6	WM 36x30x16 Type 316L	1	36	895	30	760	16	400	34	870	28	704
WMS483616N6	WM 48x36x16 Type 316L	1	48	1195	36	900	16	400	45	1155	33	840
WMS603616N6	WM 60x36x16 Type 316L	1	60	1495	36	900	16	400	57	1455	33	840

*Additional latching option available. In addition to the standard ¼-turn latching system, a 3-point latch option is available for these products. To order add "3PT" at the end of marked alphanumeric part number.

Hygienic Design (HD) Wallmount Enclosures

HD Terminal Boxes

Width	Front mm	Packs of	150	150	200	300	400	400
	Rear mm		172	177	227	327	427	427
Height	Front mm		150	150	200	200	200	300
	Rear mm		172	177	227	227	227	327
Depth mm			80	120	120	120	120	120
Model no.		1 pc(s).	1670.600	1671.600	1672.600	1674.600	1675.600	1676.600

Accessories

HD wall spacer bracket	1 pc(s).	4000.100	4000.100	4000.100	4000.100	4000.100	4000.100
Mounting plate	1 pc(s).	1560.700	1560.700	1562.700	1563.700	1564.700	1568.700
Support rail TS 35/7.5	10 pc(s).	2314.000	2314.000	2315.000	2316.000	2317.000	2317.000
HD cable gland		Details on Rittal.us					

Compact enclosure HD

Width in. (mm)	Packs of	8.6" (220)	15.3" (390)	15.3" (390)	20.1" (510)	24.0" (610)	24.0" (610)
Height (front) in. (mm)		13.7" (350)	16.9" (430)	25.5" (650)	21.6" (550)	16.9" (430)	25.5" (650)
Height (rear) in. (mm)		17.2" (437)	21.6" (549)	30.2" (769)	26.3" (669)	23.6" (601)	30.2" (769)
Depth in. (mm)		6.1" (155)	8.2" (210)	8.2" (210)	8.2" (210)	11.8" (300)	8.2" (210)
Mounting plate width in. (mm)		6.3" (162)	13.1" (334)	13.1" (334)	17.6" (449)	21.6" (549)	21.6" (549)
Mounting plate height in. (mm)		10.8" (275)	13.9" (355)	22.4" (570)	18.5" (470)	13.9" (355)	22.4" (570)
Model No.	1 pc(s).	1302.600	1306.600	1308.600	1307.600	1320.600	1310.600
Weight lbs. (kg)		14.8 lbs. (6.6)	32.6 lbs. (14.7)	39.7 lbs. (17.9)	43.6 lbs. (19.7)	47.1 lbs. (21.7)	60.6 lbs. (27.4)

Width in. (mm)	Packs of	31.8" (810)	31.8" (810)	31.8" (810)	31.8" (810)	24.0" (610)	29.9" (760)
Height (front) in. (mm)		16.9" (430)	25.5" (650)	41.5" (1050)	49.2" (1250)	31.8" (810)	31.8" (810)
Height (rear) in. (mm)		21.5" (549)	32.3" (821)	48.1" (1221)	55.9" (1421)	36.6" (929)	38.6" (981)
Depth in. (mm)		8.2" (210)	11.8" (300)	11.8" (300)	11.8" (300)	8.2" (210)	11.8" (300)
Mounting plate width in. (mm)		29.4" (749)	29.1" (739)	29.1" (739)	29.1" (740)	21.6" (549)	27.7" (704)
Mounting plate height in. (mm)		22.4" (570)	13.9" (355)	37.5" (955)	45.4" (1155)	28.7" (730)	28.7" (730)
Model No.	1 pc(s).	1314.600	1315.600	1316.600	1317.600	4000.012	4000.014
Weight lbs. (kg)		56.3 lbs. (25.5)	85.1 lbs. (39.0)	132.7 lbs. (60.1)	156.8 lbs. (71.0)	70.8 lbs. (32)	74.1 lbs. (34)

Accessories

HD wall spacer bracket	1 pc(s).	4000.100
HD cable gland		Details on rittal.us
HD hinge	2 pc(s).	4000.130
Rails for interior installation	4 pc(s).	Details on rittal.us
HD T-handle	1 pc(s).	4000.065

Rittal – The System.

Faster – better – everywhere.

- Enclosures
- Power Distribution
- Climate Control
- IT Infrastructure
- Software & Services

Rittal North America LLC

Woodfield Corporate Center
425 North Martingale Road, Suite 400 • Schaumburg, Illinois 60173 • USA
Phone: 937-399-0500 • Toll-free: 800-477-4000
Email: rittal@rittal.us • Online: www.rittal.com

Rittal Limited

6485 Ordan Drive • Mississauga, Ontario L5T 1X2 • Canada
Phone: 905-795-0777 • Toll-free: 800-399-0748
E-Mail: marketing@rittal.ca • Online: www.rittal.ca

Rittal Mexico

Dr. Roberto Gayol 1219-1B • Col. Del Valle Sur, 03100 • Mexico, D.F.
Phone: (+52) (55) 5559-5369 • Toll-free: 01 800 8 Rittal (748.825)
E-Mail: info@rittal.com.mx • Website: www.rittal.com.mx

US356-BR-TR ■ 12/22

ENCLOSURES

POWER DISTRIBUTION

CLIMATE CONTROL

IT INFRASTRUCTURE

SOFTWARE & SERVICES

